



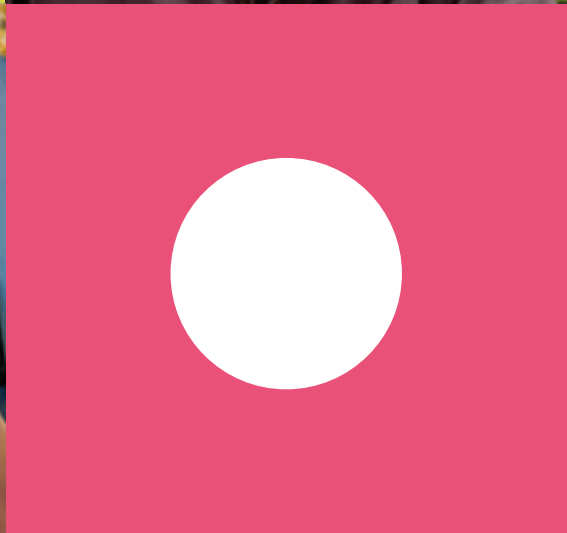
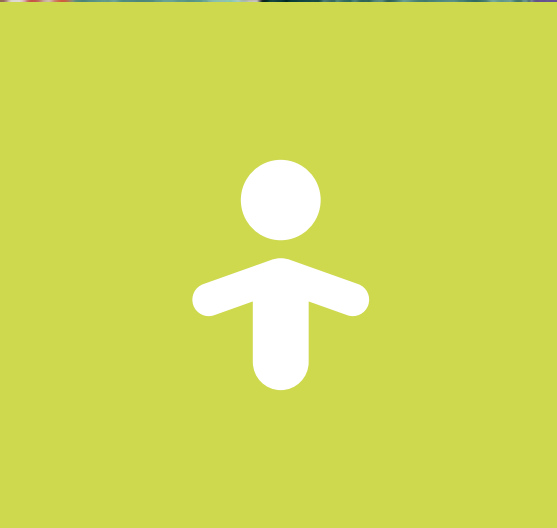
**St Piers**  
School



**Prospectus**









# Welcome to St Piers School

Welcome to St Piers School! We are a registered residential special school providing education to both day and residential pupils, aged 5 to 19.

Our school provides a warm and friendly environment to encourage learning and is made up of three phases, Lower School, Middle School, and Upper School. We offer a three-tiered approach to learning across these phases called 'Learner Journeys' and these enable us to deliver personalised learning programmes to suit every child and young person.

All our students have an Education, Health, and Care Plan (EHCP) and a learning difficulty. Some students have epilepsy and/or autism as well as other complex neurological conditions but we don't believe any of these conditions or needs should get in the way of any child or young person reaching their full potential.

We support our students to develop the skills, understanding and confidence they need to achieve personal goals and academic success, helping them to lead fulfilled, healthy, and happy lives throughout their education and in their communities.

We use a multi-disciplinary approach to delivering our curriculum and meeting the needs of our students and this includes input from our onsite Physiotherapists, Occupational Therapists, Speech and Language Therapists, Education Psychologist and Play Therapist.



Our school values are embedded in our curriculum and in all that our students do, every day. These values are:

## **Be Empowered, Be Kind, Be Inspired**

From the moment a child or young person arrives at St Piers School, they are supported to progress as a unique individual. We place the student at the centre of everything we do and will work with them to identify their goals and aspirations as we help them to become the very best version of themselves!

*Ginnie Batten-Evatt*

Head of St Piers School

*“Pupils are happy, settled and very well cared for at St Piers School. School life is busy and fulfilling, with lots to do and learn each day. Pupils who met with inspectors talked sensibly and enthusiastically about the fun that they have and about some of their favourite subjects.”*

Ofsted



# St Piers School

Located in Lingfield, Surrey, St Piers School originally opened in 1904 to cater for young people with epilepsy. Today, our modern school provides state of the art facilities for children and young people with a range of special educational needs and disabilities.

The school is set in a beautiful countryside location that benefits from being part of a bustling village and close to large towns with a wide range of activities that students can access as part of their imaginative and exciting curriculum.

*“ My daughter is making amazing progress socially and academically and although she cannot verbalise her progress, I can see that her understanding has much improved. She looks forward to coming to school and is always happy to be at school. ”*

**Parent**



School



Boating Pond



# Introducing the students

To ensure that children have the best experience at St Piers, all our staff have extensive experience in supporting children with a range of special educational needs. Our focus is on those children with:

- Autism
- Epilepsy
- Moderate Learning Difficulties (MLD)
- Severe Learning Difficulties (SLD)
- Profound & Multiple Learning Difficulties (PMLD)

Some students at St Piers have epilepsy and, as part of the Young Epilepsy charity, we do provide specialist support for children with epilepsy. Our understanding of the condition and the availability of specialist health and support staff, means that children can effectively manage their epilepsy and ensure that it is not an obstacle to meeting their potential.

**“We strive to support the students at St Piers School to achieve their full potential.”**







In addition, we have extensive experience of working with children and young people with autism. St Piers works closely with the Autism Education Trust to ensure our environments and our staff provide the best learning experiences for students with autism.

Our teams are here to support all our learners. Together, we can make sure they will excel, via exciting Learner Journeys that will help them overcome a range of barriers to learning.



*“ I love school and doing all the different things. I have seven best friends and I like spending time with them. I am good at listening, literacy, maths, and homework. ”*

**Student**



# Learning with St Piers

All our children and young people have different abilities and needs, and we work with them to create personalised learning programmes that meet their needs and aspirations. Our students take part in a wide-ranging education programme that focusses on the real substance of education and preparation for adulthood and life.

Our experienced team of highly qualified staff provide support and guidance every step of the way and this helps students to develop relevant and meaningful skills that are important in everyday life, and which will help them develop their independence and confidence.

St Piers School provides a three-tiered curriculum called Learner Journeys. A multi-disciplinary approach to learning is embedded throughout each student's journey which allows them to move seamlessly through the Learner Journeys to create a personalised programme of study. This provides access to a range of learning opportunities and delivers the best possible learning outcomes for the student. The curriculum content centres around 6 key learning areas which are:

- My Communication, Interaction & Language
- My Maths
- My Personal Development and Wellbeing
- My Creativity
- My Physical Development
- My World and Community

## Learner Journeys

### Learning For Life

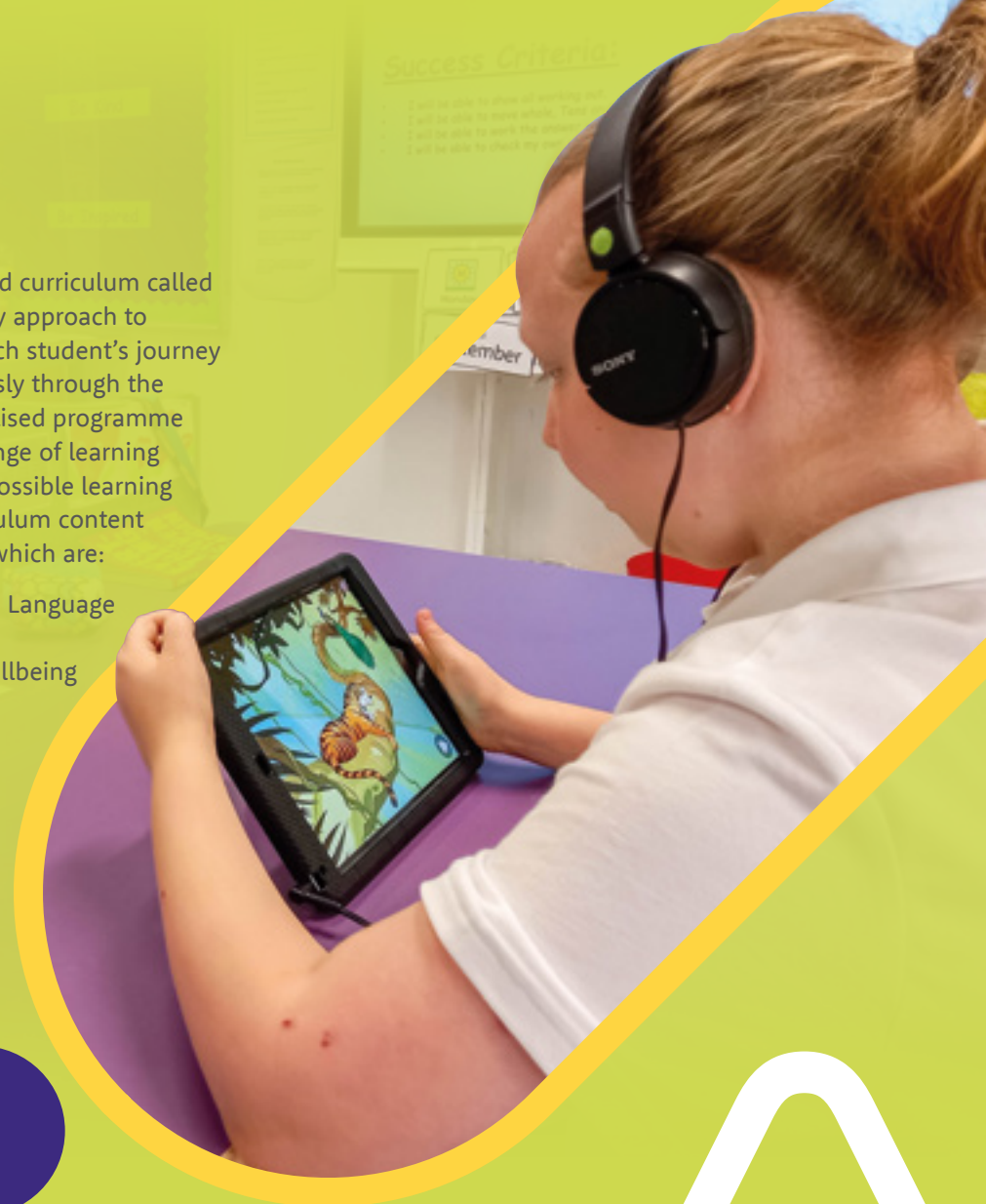
- Informal – Non Subject Specific.
- Complex Physical, Medical and Sensory Needs.
- High level of support and small groups.

### Skills For Life

- Semi-formal – Curriculum.
- Highly personalised and integrated therapeutic interventions.
- High level of support and small groups.

### Specialist Skills

- Formal – Subject Specific Curriculum.
- Focused on highly personalised learning and individual aspirations.
- Development of independence, social and life skills.





Class sizes are small, and levels of support are high. Our lessons are fully inclusive as we plan our learning for each student. The staff team adapt their delivery and teaching to meet the needs of the children across the broad range of abilities we have. Whilst our groups may have varying abilities, staff will personalise learning programmes to meet individual needs within each group.

The Upper School follows a Skills for Independence programme which includes life skills, functional skills, and skills for employability. This programme supports our students to prepare for adulthood and runs with accredited courses through OCR, Pearson-Edexcel and Equals starting at 14+.

Our therapy and pastoral teams collaborate to put plans in place to support the students where changes or adaptations need to be made to our curriculum so that we can meet their broad and individual requirements.

Residential students access our waking day curriculum through joined-up working between school and residential staff to ensure effective teaching and learning and key objectives are shared and worked on in relation to the students' EHCP targets, life skills, and independence.

*“ Our son has again made amazing progress this year. He is always happy to go to school and loves to share with us what he has been doing each day. We are very pleased he is attending St Piers School, and he is unrecognisable to the child he was before he started. ”*

**Parent**





# Learning and communication

Our teams are highly trained to accommodate a variety of learning and communication styles that help young people to excel and feel included.

These include visual and auditory aids, sign language, reinforcement systems, intensive interaction, information and communication technology and sensory equipment, all designed to enhance students' educational experience and make it the best it can possibly be.





# Learning environments

Whatever a child's individual needs, we will have a learning environment that is right for them. A place where they can develop their skills, academic understanding, and imaginative power. Children at St Piers have access to:

- Fully equipped classrooms that include interactive whiteboards, hoisting facilities, and safe and open outside spaces
- The Imaginarium: An immersive space with 4D and other multimedia technology, to help students stretch their imagination
- Sensory Integration Suite with access to supportive therapies
- Fully accessible swimming pool
- Life skills bungalow and St Piers shop
- Forest School in our own ancient woodland
- Therapy Donkeys
- Radio station
- Creative arts department including interactive music and drama
- A fleet of accessible minibuses to facilitate community links

**To discuss the learner journey that is best for your child, call us on 01342 831348 or email [admissionsandplacements@stpiers.org.uk](mailto:admissionsandplacements@stpiers.org.uk)**

*“ I love coming to St Piers School, my friends and teachers are all really nice and we get to do lots of exciting things. My favourite thing is seeing the therapy donkeys and taking them for a walk. ”*

*Student*

*Outdoor Woodland Learning*



# Getting Active

Our dynamic PE team believe that physical education, activity, and sport, are unique and vital contributors to a student's physical development and well-being. Offering a range of fun and exciting activities, from archery to canoeing, all students can participate safely, in a fully supported environment.

We provide opportunities for everyone to succeed and for us, developing positive attitudes towards being active are a priority. We provide students with a platform from which they can build physical skills, improve aspects of fitness, and develop both personal and interpersonal skills. We believe it motivates our students and increases their self-esteem and general wellbeing.

*“ Students thoroughly enjoy the school's excellent facilities, which include a swimming pool, a gym and a set of customised go-karts. During the inspection, pupils thoroughly enjoyed running the school's tuck-shop, taking turns to serve customers and to use the till. ”*

Ofsted

St Piers has its own dedicated swimming pool exclusively for student use.



Through being active, students are encouraged to develop essential social skills such as concentration, self-discipline, and co-operation whilst being aware of the need to think of others. We encourage students to respect diversity, to listen to others and value their opinions, and to actively integrate with their peers.

Children have access to:

- Our accessible outdoor gym
- Our large pond where learners can enjoy water-based activities such as paddle sports
- Our 'Wheely Boat', a wheelchair accessible boat which provides access to water-based activities at our local reservoir
- Our large sports hall where young people can take part in a range of adapted sports and games including go-karts, adapted bikes, and trampolines, football, basketball, archery etc.
- Our indoor fitness gym with specialist equipment that all our students can use
- Community sports and leisure facilities
- Riding for the disabled (RDA)





# Getting Creative

Being creative gives our students the opportunity to find their uniqueness and helps them solve problems and overcome challenges. We also believe that creativity helps children and young people develop their independence, positivity, and self-esteem.

Our specialist and highly trained staff use music, dance, drama, and art to help learners develop their imagination and creativity. This means that, whatever their needs, each child will learn that they can be as creative and as expressive as they want to be.



“ Adults are experts in supporting pupils’ emotional needs, so that pupils feel secure, valued and respected. ”

Ofsted



# Boarding at St Piers

For some students, boarding at St Piers School enhances their potential for successful education through the proximity to school and a dedicated level of support. Our residential offer in school is for weekly boarding with a termly boarding option for students over the age of 18.

Boarding at St Piers gives students the opportunity to access a range of different learning and social experiences, both on campus and in the local community.

Students boarding here have the opportunity to socialise with their peers through a range of after school activities such as:

- Access to sports facilities
- Bowling and cinema
- Youth Club & Disco
- Sensory based activities

*“ Everyone in both school and residential have shown they only have my son’s best interests in mind. He has settled really well and loves it. I have never seen him make so much progress in a short space of time before. ”*

**Parent**





## The 'Waking Day' Curriculum

This is our specially designed learning programme for residential students giving them a structured and productive day — all day, not just during classroom hours.

Supporting students to improve their communication, independence and self-care skills, we help them build skills that are transferable into the home, community, and lifelong placements.

## The Team

Our residential staff work closely with our education, therapy, and medical teams to make sure the care our students receive is personalised to their needs — whether that means providing a special diet or understanding how they prefer to communicate.

All our staff undergo regular training to update their skills and are qualified to support a range of individual needs. If you have any concerns about how we can address specific requirements, then let us know and we can discuss this with you.

## The Rooms

All our students have their own bedroom which they can decorate to reflect their unique personality. Each house accommodates six or seven students, providing a social environment where students can make friends and enjoy fun activities with their peers.

There are spacious, well-equipped kitchens and dining rooms where students are supported to plan menus and cook, and we will also help them learn a range of household skills.

Students are supported to focus on developing skills related to their EHCP outcomes.

Showers and bathrooms have specialist equipment, and we work with students to develop personal care routines that will help them live independently in the years to come.

## Families

We want students to stay connected with their family and friends who are welcome to visit at any time; please just check with us before you

come in case we are doing an activity off site! Students can also be contacted regularly via FaceTime, Teams, or phone — whichever is most convenient.

**Want to learn more about how you can board with us at St Piers?**

Please call us on **01342 831348** or email **[admissionsandplacements@stpiers.org.uk](mailto:admissionsandplacements@stpiers.org.uk)**



# Meeting Health and Therapy Needs

Students at St Piers School have access to our exceptional medical centre, based here on campus. In addition to providing 24-hour care, we work with some of the world's best epilepsy and neurology experts.

Our highly trained and approachable staff will listen and discuss students' health needs and build an individualised health programme with them.

The following professionals are available:

- Dieticians
- Nursing care including Epilepsy Nurse Consultants
- Occupational therapists
- Pharmacy advisor
- Physiotherapists
- Play specialists
- Psychologists
- Senior registrars
- Speech and language therapists

The campus-based therapies team at St Piers provide clinical assessments throughout school which, alongside a young person's EHCP, are used to inform the level of input required. Intervention provided by the therapies team is comprised of direct work with students on a 1:1 basis and group work both in and out of the classroom environment.

Our team of highly specialised therapists and nurses work across the school providing holistic support for students during their time with us. Nurses and therapists provide student specific training to staff working with students to ensure that medical protocols, feeding regimes, and therapeutic strategies are fully understood and can be implemented throughout the waking day.





# Life after St Piers – what's next?

From the moment a student starts at St Piers School, we work with them, their family, and their local authority to plan for a smooth transition into the next stage of their life.

Opportunities to plan for the future include:

- Discussing aspirations during assessments and annual reviews.
- Moving on to St Piers College.
- Visits to transition events to learn about different opportunities for independent and supported living.
- Practicing independent living skills in our Life Skills centre.
- Working closely with teachers and careers advisors who provide support around further education, training, or work.
- Gaining valuable skills and knowledge with realistic work experience placements.
- Learning about vocational activities in our café, farm, and horticulture centre.

**Whatever the future holds, we will help you get there.**





# How to apply

Applying to St Piers School is quite straightforward and our expert admissions team are happy to help guide you through the process and are on hand to answer any questions you may have. You can call them on **01342 831348** or email **admissionsandplacements@stpiers.org.uk**

## Attend a Virtual Open Day

We hold Virtual Open Days regularly throughout the year. Dates and links to book places are available at <https://www.stpiers.org.uk/choosing-st-piers/virtual-open-days-and-informal-visits>

## Come for an Informal Visit

If after attending one of our Virtual Open Days, you think we might be the right school for you, you are welcome to come and have a look around, simply contact our Admissions Team on **admissionsandplacements@stpiers.org.uk** to arrange an Informal Visit.

## Complete an Application Form

You will need to complete an application form, which can be downloaded from our website, and return it to us together with your EHCP and latest annual review. You should let your Local Authority know you have applied to St Piers School, and you can also ask them to consult with us for a placement.

## Application Review

Our Admissions Panel will review your application and, if we think we can meet needs, we will invite you in for an assessment visit. We will also meet with your current school so that we understand as much as possible about your needs and whether we can meet them.

## Assessment Visit

You will spend some time in school and meet with experts from some of our teams including education, therapy, and psychology. If you are looking for a residential placement you will also meet a member of our residential team. The Assessment Visit takes half a day and will either be in the morning or the afternoon.

## St Piers Decision

Following the Assessment Visit, the Admissions Panel will meet again to decide if we are able to offer you a place. We will let you know within 5 working days of your Assessment.

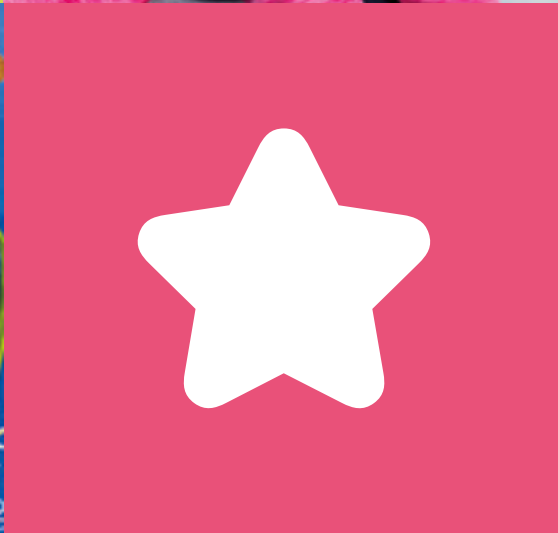
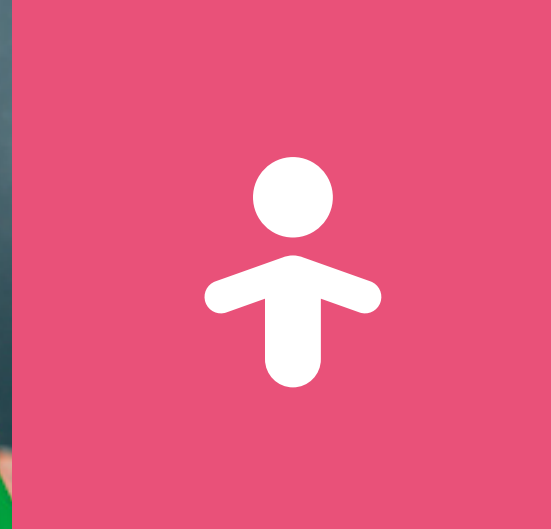
## Funding Request to Local Authority

If we can meet needs and offer you a place, we will notify your local authority and submit a detailed assessment report and funding request. We aim to do this within 10 working days of your Assessment.

## Local Authority Decision

Your Local Authority Panel will review our placement offer costs and let us, and you, know if they agree to fund the placement.







# Whatever the future holds, we will help you get there.



**St Piers**  
School

St Piers School | St Piers Lane | Lingfield | Surrey | RH7 6PW

Tel: 01342 831264 | Email: [education@stpiers.org.uk](mailto:education@stpiers.org.uk)  
Web: [www.stpiers.org.uk](http://www.stpiers.org.uk)



@StPiers



@StPiersSEND



@StPiersSchoolAndCollege

St Piers School and St Piers College are operated by  
Young Epilepsy which is the trading name of  
The National Centre for Young People with Epilepsy.  
Registered Charity No. 311877 (England and Wales)